

Random Cloud,
Design by Chia-Ying Lee

Model Random Cloud 14 Lights Ø23

Random Cloud captures the essence of why a cloud continues to fascinate us: voluminous yet simultaneously light and ethereal.



Random Cloud 14 Lights Ø23	Light source	Canopy: Metal	Diffuser: Blown glass	Code 2700 K	Code 3000 K
	LED 2700 K 14 x 3 W 6300 lm 350 mA CRI 90 MacAdam 3-Step	<input type="radio"/> Matte White – 9010	<input type="radio"/> Clear	22123 0027	22123 0030
	LED 3000 K 14 x 3 W 6720 lm 350 mA CRI 90 MacAdam 3-Step	<input type="radio"/> Matte White – 9010	<input type="radio"/> Frosted White	22123 1327	22123 1330
	<input type="radio"/> Matte White – 9010	<input type="radio"/> Chrome	22123 4027	22123 4030	
	<input type="radio"/> Matte White – 9010	<input type="radio"/> Glossy Smoke	22123 4327	22123 4330	
	<input type="radio"/> Matte White – 9010	<input type="radio"/> Glossy Bronze	22123 4627	22123 4630	
	<input type="radio"/> Matte White – 9010	<input type="radio"/> Gold	22123 5027	22123 5030	
	<input type="radio"/> Matte White – 9010	<input type="radio"/> Rose Gold	22123 5527	22123 5530	

LED and driver included

Net weight: 11.50 kg

Parcels: 29



IP20



TRIAC

220-240V

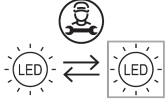


Energy efficiency class

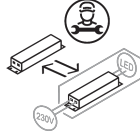
D

Ecodesign Regulation

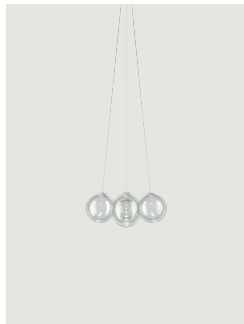
The LED-only light source contained in this fixture must only be replaced by the manufacturer, its support service or similarly qualified personnel.



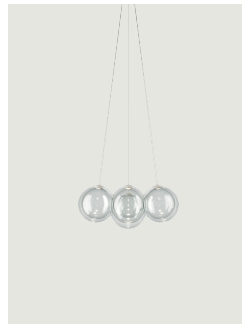
The LED driver contained in this fixture must only be replaced by the manufacturer, its support service or similarly qualified personnel.



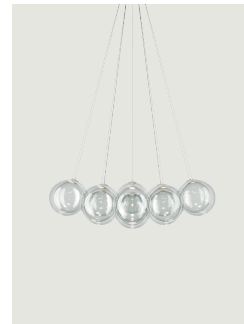
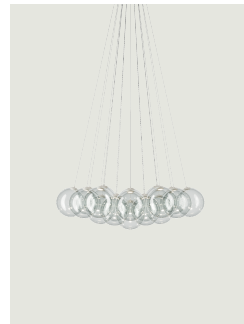
Options of Random Cloud



Random Cloud 7 Lights Ø23



Random Cloud 7 Lights Ø28

Random Cloud 14 Lights
Ø28Random Cloud 19 Lights
Ø23